

PROFESSIONAL USAGE:

For Cat Eye Gel Polishes only

***STEP 4 & 5 are optional.** These two steps are additional steps to create darker color Cat Eye Effect. For normal Cat Eye Effect, please skip these two steps.



STEP 1. With normal manicure process, clean nails and then trim nail surface.



STEP 2. For long lasting result, apply HMD Base Coat first.



STEP 3. Cure with UV LED lamp for 10-120 seconds, depends on the nail dryer.



***OPTIONAL**

STEP 4. If you want darker color Cat Eye Effect, apply 1st thin layer of HMD BLACK color gel coat (sold separately). For normal Cat Eye Effect, please proceed to STEP 6.



***OPTIONAL**

STEP 5. Cure with UV LED lamp for 10-120 seconds, depends on the nail dryer.



STEP 6. Apply HMD 3D Cat Eye Gel Nail Polish, **DO NOT** cure under UV LED lamp.



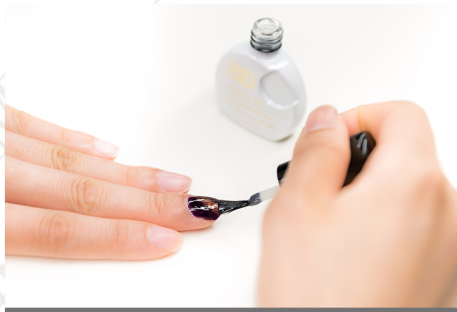
STEP 7. Hold the HMD Magic Stick about 2mm above the nail surface for 5 seconds until 3D pattern shows up.



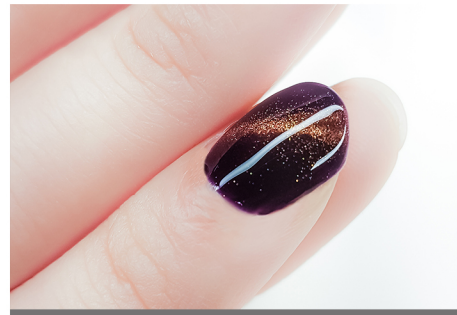
STEP 8. Cure with UV LED lamp for 10-120 seconds, depends on the nail dryer.

Repeat Step 2 to 8 for other nails.

(IMPORTANT: Complete Step 2 to 8 for each individual nail)



STEP 9. Apply HMD no wipe Premium Top Coat for all nails, cure under UV LED lamp for 5-60 seconds, depends on the nail dryer.



Enjoy your 20 Days high shine Manicure!

NOTICE:

1. Magic (Magnet) Stick is a essential tool to create the Cat Eye Effect.

2. Numbers of layers applied would affect depth of color OR uneven color. Please follow the above instruction carefully. Curing time will vary, depends on body and room temperature. Please allow additional 10-20 seconds if it's necessary.

3. To prevent the gel polish from lifting, it's recommended to cap the free edge/tip on every coat. It's especially important for the base and top coat.

4. Please use HMD Base Coat and Top Coat for best results. Base Coat would provide perfect foundation for your manicure which would affect durability. Top Coat would deliver that same mirror-like shine, minus the upkeep and brittle nails.